

#### Frequency Range:

32.00kHz to 100.00kHz

#### Features:

- High Reliability & Low Cost Unit
- Tight Stability & Extended Temperature Available
- RoHS Complaint



Actual Size



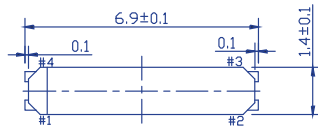
### ■ Standard Specifications

Item	Value	
Frequency Range	32.768kHz	32.0~100.0kHz
Equivalent Series Resistance (ESR)	65kΩ Max	65kΩ to 25kΩ
Frequency Tolerance @ 25 °C	±20ppm, ±50ppm (tighter tolerance also available)	
Temperature Coefficient	-0.034±0.006ppm /°C <sup>2</sup>	
Operating Temperature Range	-40 °C to +85 °C (other operating range also available)	
Operable Temperature Range	-55 °C to +125 °C	
Load Capacitance	7.0pF , 9.0pF , 12.5pF is standard	
Drive Level	1.0μW Max	
Shunt Capacitance	2.5pF Max	
Aging	±5ppm/year	

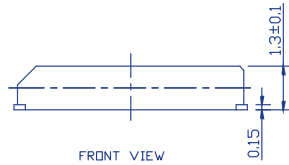
#### Note:

1. Manufacturer reserves the right to change the specification and content of this product for improvement without notification.
2. Custom specification is welcome. Please contact our sales representative for further details.
3. If the crystal is intended for applications which have direct impact on human life and properties, and require a high degree of reliability and safety concerns, customers must provide full information such as but not limit to the application, electrical and reliability specification at the inquiry beginning stage.
4. Customers have to agree to the "Guideline for handling crystal units" and "Standard Terms and Condition of Sales" which is printed this catalog before placing orders to our company or our distributors. There are also unpredictable factors such as applied condition, oscillation margin and etc and customers must check them beforehand. In case of queries, please do not fail to send inquiry to our company before ordering.

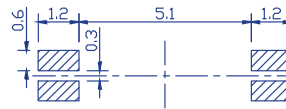
■ Dimensions (mm) and Solder Pad Layout (mm)



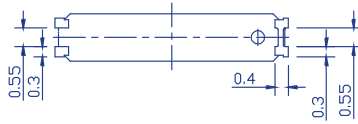
TOP VIEW



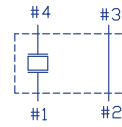
FRONT VIEW



RECOMMENDED LAND PATTERN



BOTTOM VIEW



ELECTRODE ARRANGEMENT

MARKING INFORMATION



REMARK: \*#2\* & \*#3\* NC